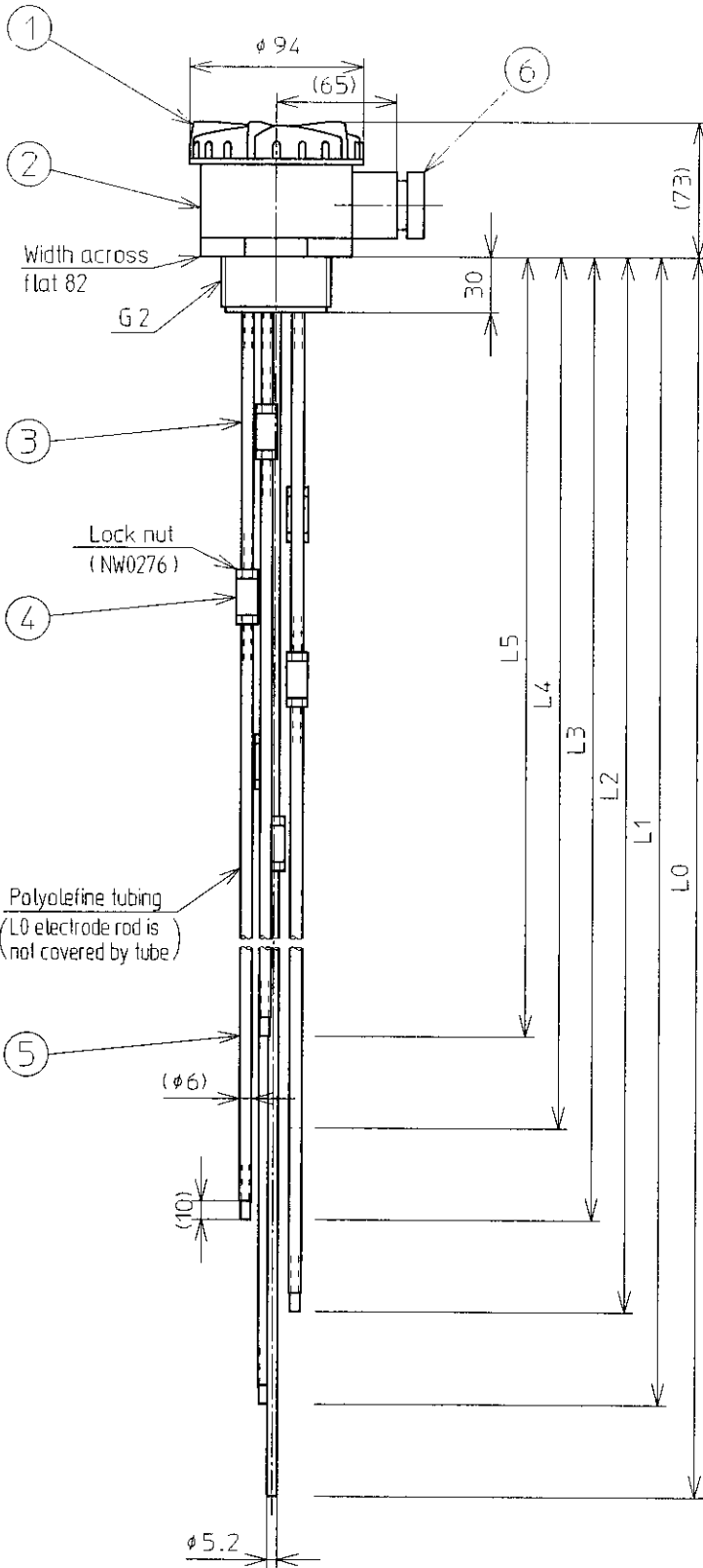
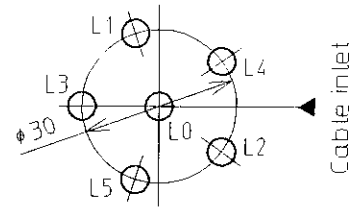


REVISIONS				
REV	DATE	DESCRIPTION	BY	APP. BY
△				
△				
△				



Layout of electrode rod in the terminal box



Tag No.		
L0		
L1		
L2		
L3		
L4		
L5		
Qty.		

Note  
 -Lock nut : Two for each per connector

6	Cable gland	1	ABS
5	Outside electrode rod		NW0276 (Equivalent Hastelloy C)
4	Connector		NW0276 (Equivalent Hastelloy C)
3	Inside electrode rod	6	NW0276 (Equivalent Hastelloy C)
2	Terminal box	1	PVC
1	Cover	1	PVC
P.No.	Name	Qty.	Material

Cable inlet : Equivalent JIS F 20a(G3/4)

DATE 2005-10-18	DR. BY <i>G. Bancho</i>	TITLE OUTLINE DRAWING OF ELECTRODE LEVEL SENSOR
SCALE N.T.S.	CH. BY <i>H. Masahiro</i>	
UNITS MILLIMETERS	APP. BY <i>T. Kawahita</i>	

MODEL FE83C-6



**NOHKEN INC.**  
OSAKA, JAPAN

DRAWING NO.

AS 009111 △