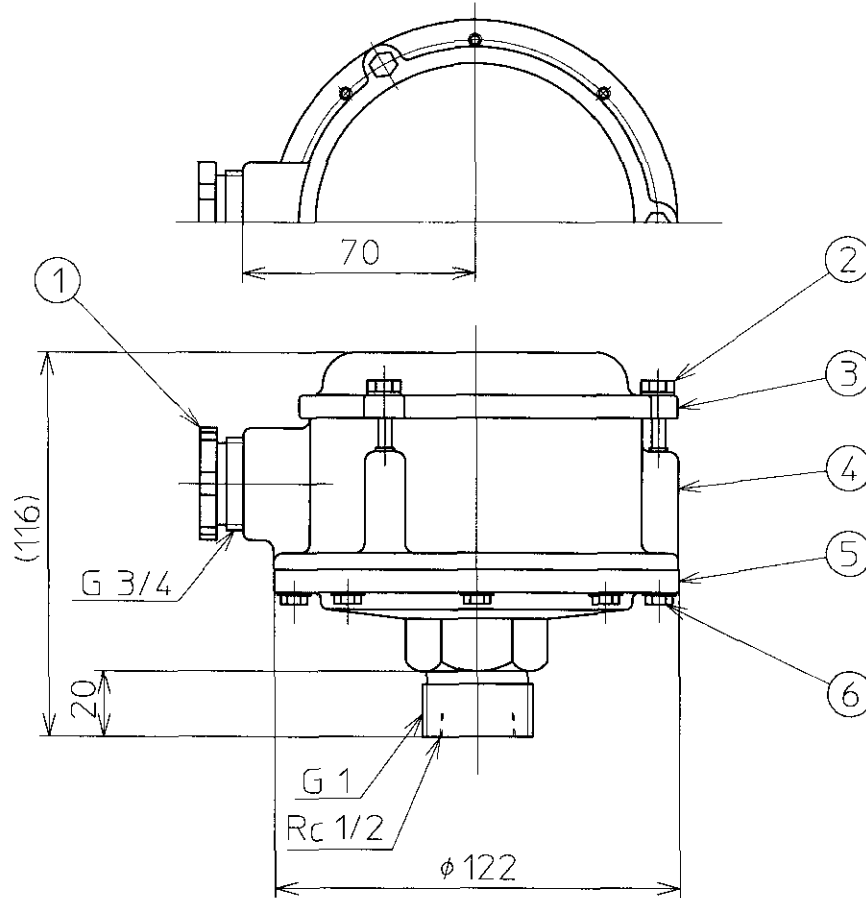


REVISIONS				
REV	DATE	DESCRIPTION	BY	APP. BY
△				
△				
△				



Diaphragm : FPM

Cable Inlet : JIS F 20a (G 3/4)

Contact capacity	250 V 5 A AC
(Resistive load)	250 V 0.25 A DC
Operating point	70±10 mm (1/2 B I=300 Pipe)
Release point	50±15 mm (1/2 B I=300 Pipe)
Internal Circuit	

6	Bolt	8	Stainless steel
5	Chamber	1	Equivalent 304 Stainless steel
4	Housing	1	Aluminium die casting (ADC12)
3	Cover	1	Aluminium die casting (ADC12)
2	Cover bolt	3	304 Stainless steel
1	Cable gland	1	Brass (3604BD, Nickel plating)
P.No.	Name	Qty.	Material

DATE 2004-06-08	DR. BY <i>[Signature]</i>
SCALE N.T.S.	CH. BY <i>[Signature]</i>
UNITS MILLIMETERS	APP. BY <i>J. Kawahita</i>

TITLE	OUTLINE DRAWING OF PNEUMATIC LEVEL SENSOR		
MODEL	FP-1S		
DRAWING NO.	AS 004309 △		

NOHKEN

NOHKEN INC.
OSAKA, JAPAN