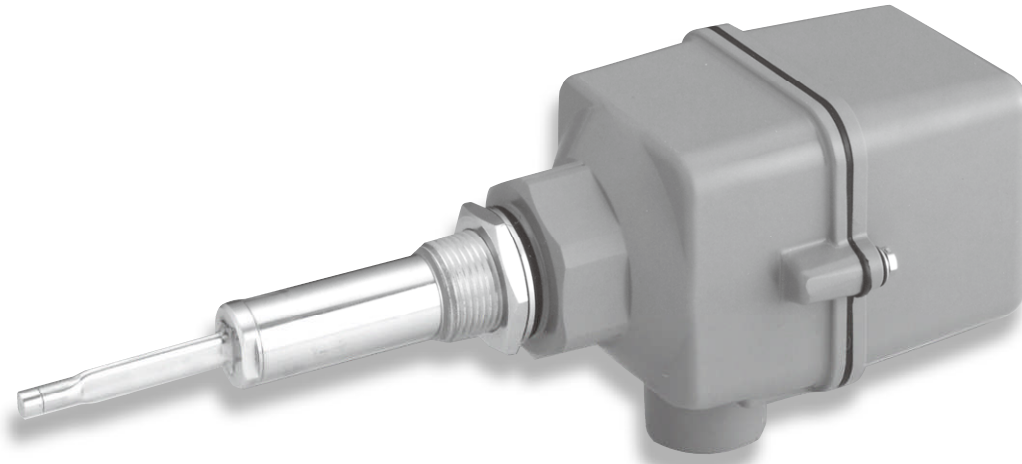


MODEL VM



Features

- Simple and Compact design
- Ideal for small hoppers
- Wide sensitivity range from 0.2g/cm³
- Patented principle and probe construction.

General Description

The VM series is designed for use in small hoppers up to 2 meter in height. This compact level sensor is suitable for bulk handling bins, hoppers, feeders, etc. It helps prevent hopper overflow, empty holding tanks, and plugged chutes.

Operational Description

The detection rod vibrates by installing piezo-electric element and acceleration pick-up mounted detection rod at the tip of the internal detection rod. The piezo-electric element provides vibration and the acceleration pick-up detects damps in the vibrational amplitude. Covered with solids dampens vibration of the detection rod. The electronic circuit detects the damping of these vibration and converts into the relay output.

Ordering Information

VM41	90 to 132V AC, 50/60Hz
VM42	180 to 264V AC, 50/60Hz
VM49	24V (20 to 30V) DC
	G G3/4" Standard
	T NPT3/4"
	133 L=133mm Standard
	180 L=180mm
VM41	G 133 = VM41G-133

Specifications

Model	VM41, 42, 49	
Drawing		
Mounting	G3/4 or NPT3/4	
Supply Power	VM41	90 to 132V AC 50/60Hz
	VM42	180 to 264V AC 50/60Hz
	VM49	24V DC
Power Consumption	Approx. 2.5VA or 1W Max.	
Relay Output	1 SPDT, 240V 3A AC, 30V 3A DC (Resistive) C-NO: Normally Open contact C-NC: Normally Closed contact	
Detection	Approx. 3 seconds for covered	
Time Delay	Approx. 3 seconds for free	
Operating Temperature	Housing	-20 to 60°C
	Vibration rod	0 to 60°C
Maximum Pressure	1 MPa	
Maximum Humidity	85% RH	
Sensitivity	Apparent density of 0.2g/cm ³ Min.	
Vibration Frequency	Approx. 500Hz	
Material	Housing	ADC12 and ABS
	Vibration rod	304SS
Cable Entry	G3/4	
Protection	Housing	IP65
	Vibration rod	IP68
Fail safe	High or Low by switch	
Indication	Red LED for Relay status	